



Tea Tree Gully Gem & Mineral Club Inc. (TTGGMC)
Clubrooms: Old Tea Tree Gully School, Dowding Terrace, Tea Tree Gully, SA 5091.
Postal Address: Po Box 40, St Agnes, SA 5097.
 President: Ian Everard. H: 8251 1830 M: 0417 859 443 Email: ieverard@bigpond.net.au
 Secretary: Claudia Gill. M: 0419 841 473 Email: cjjrgill@adam.com.au
 Treasurer: Russell Fischer. Email: rfischer@bigpond.net.au

**September
Edition
2016**

"Rockzette"

Tea Tree Gully Gem & Mineral Club News

In This Edition...	President's Report	Meetings, Courses & Fees.
<ul style="list-style-type: none"> Diary Dates. Stop Press. President's Report. Club Activities. Meetings, Courses & Fees. TTGGMC – Bits and Pieces. Ian showcases his quartz collection. General Interest. Nancy's Travel Poem. Members Notice Board – For Sale items x 2 and Southern Rockhounds invitation 	<p>Hi All, I haven't heard anything from the Council yet, regarding work on the clubroom's kitchen floor. As soon as I do, I will let you all know, because it might affect when we can have our Christmas party. Cheers, Ian.</p>	<p>Meetings (Amended for Jun, Jul, Aug & Sep.) Club meetings are held on the 1st Thursday of each month except January: Committee meetings start at 7.00 pm. General meetings - arrive at 7.30 pm for 8.00 pm start.</p>
	<p style="text-align: center;">Club Activities</p>	<p>Faceting (times to be advised) <i>Course 10 weeks x 2 hours Cost \$20.00.</i> <i>Use of equipment \$1.00 per hour.</i></p>
<p style="text-align: center;">Diary Dates</p>	<p>Competitions Competitions have been suspended indefinitely and are currently replaced with members showcasing an interesting part of their collection.</p>	<p>Lapidary (Tuesday mornings) <i>Course 5 weeks x 2 hours Cost \$10.00.</i> <i>Use of equipment \$1.00 per hour.</i></p>
<p style="text-align: center;">2016</p> <ul style="list-style-type: none"> Sat 3rd - Sun 4th Sept 2016 Mildura and District Gem and Mineral Club Annual Show. Sunraysia Masonic Centre Irymple, Calder Highway, Irymple, Victoria. 30th September, 1st October and 2nd October, 2016. Broken Hill Gem and Mineral Show, 'Rock On 2016' Memorial Oval / Showgrounds, Broken Hill, NSW. 	<p>Field Trips No fieldtrips planned during Summer months.</p> <p>Library Librarian - Augie Gray There is a 2 month limit on borrowed items. When borrowing from the lending library, fill out the card at the back of the item, then place the card in the box on the shelf. When returning items, fill in the return date on the card, then place the card at the back of the item.</p>	<p>Silver Craft (Friday mornings) <i>Course 5 weeks x 2 hours Cost \$20.00.</i> <i>Use of equipment \$1.00 per hour.</i></p> <p>While some consumable materials are supplied by the club, trainees must supply any additional requirements.</p> <p>Trainees who use the club equipment (for example, magnifying head pieces, faceting equipment, tools, etc.) must return them to the workshop after usage. Trainees are also encouraged to purchase and use their own equipment.</p>
<p style="text-align: center;">Stop Press</p>		<p>In the interest of providing a safe working environment, it is necessary to ensure individuals using the workshops follow the rules set out in <i>Policy No. 1 - 20/11/2006</i>.</p>
<p style="text-align: center;">Amended</p> <p>Winter Club Meetings Arrangement The trial Winter meetings schedule has been amended; it now covers June, July, August and September. That is, on the first Thursday of these months the Committee meeting will start at 3pm and the general meeting will start at 3.30pm.</p> <p>NOTE 1: Subs and Fees are now due, to be paid before start of the November meeting.</p> <p>NOTE 2: A 20 minute Video on the 1956 Murray River Flood will be shown at the September meeting as there is no booked speaker. <i>Can you remember the flood's impact on South Australia?</i></p>	<p>Silver Craft Friday mornings - 9 am to 12 noon. Cost \$20 for new short course attendees. All are welcome.</p> <p>Tuesday Craft Tuesday mornings - 11 am to 2.30 pm Faceting, etc. All are welcome. Contact Doug (08 7120 2221) if you would like to learn faceting.</p> <p>Wanted - The faceting group occasionally has members wishing to buy a 2nd hand faceting machine & accessories. Could anyone with one not being used please contact: Doug Walker 0871202221 or Russell Fischer 0417083227</p>	<p>It is necessary that <i>Health and Safety</i> regulations are adhered to at all times.</p> <p>Trainees must ensure: that all work stations are left in a clean and tidy state; that all rubbish is removed and placed in the appropriate bin; and where applicable, machines are cleaned and oiled.</p>
<p>The Tea Tree Gully Gem & Mineral Club Inc. is not and cannot be held responsible or liable for any personal injuries, loss or damage to property at any club activity, including, but not limited to, meetings, field trips, all crafts and club shows. An indemnity is to be signed by all participants before each and every field trip activity they attend.</p>		<p>Club Subscriptions \$25.00 Family. \$20.00 Family/Pensioner. \$15.00 Single. \$12.50 Single/Pensioner. \$10.00 Joining Fee.</p>



Mineral collecting is the hobby of systematically collecting, identifying and displaying mineral specimens. Mineral collecting can also be a part of the profession of mineralogy and allied geologic specialties. Individual collectors often specialise, for example, Ian has specialised in collecting...

quartz from widely scattered locations, both in Australia and overseas. These snapshots show that Ian has achieved the ultimate goal for most collectors; that is, he has systematically catalogued and showcased his vast and stunning collection of quartz specimens.



1956 River Murray flood.

As there is no speaker booked for the 2016 September meeting, we are going to watch a DVD about the 1956 Murray River flood. The video runs for about 20 minutes and covers both Victoria and South Australia.

The following pictures give some idea how the riverside at Morgan (SA) looked during the flood. How many of us can remember this and its impact?



The Morgan Railway platform and wharf were covered with water, so a temporary platform was erected on the outskirts of Morgan, at Lanosa Siding.



↑ The Morgan Railway platform and wharf. ↓



August 1956 Morgan Railway Station Water height above pool level 37 feet 3 inches.



Pretoria Hotel, Main Street, Mannum – served beer from the balcony!



Further down the main Street of Mannum.

Gerry Dillon's 80th Birthday 06-08-2016

Party held at TTGGMC clubrooms



Family, friends and club members joined Gerry to celebrate his 80th.



Happy birthday Gerry! It is time for you to cut the cake.



Gerry and Ellen.



Gerry and his two daughters.



Gerry and his grandchildren.



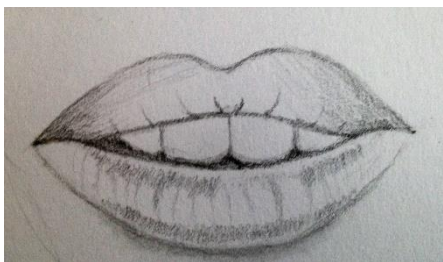
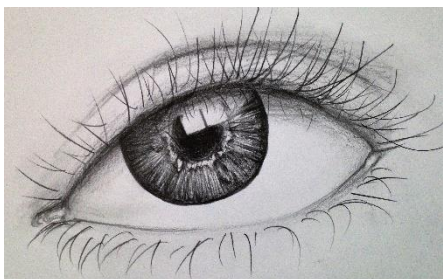
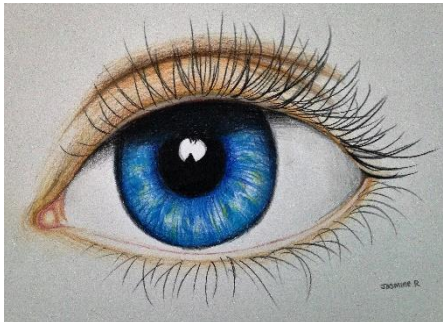
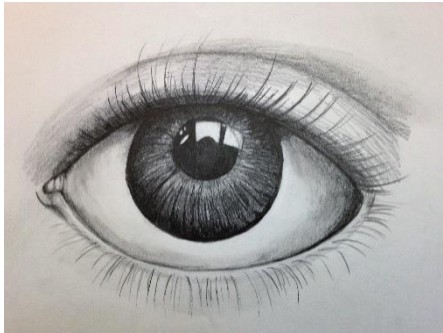
From the L – Augie, Ian, Mel and Janet.

10 WELSH COMMANDMENTS

THOU SHALL:

- WORSHIP SHEEP.
- DRINK WELSH BEER.
- WEAR THE RED JERSEY WITH PRIDE
- HAVE NO FEAR OF WATER, it will RAIN, you will get WET.
- LOVE RUGBY and any other sport WALES are playing.
- ENJOY FRIENDLY BANTER WITH OUR ENGLISH FRIENDS Especially when we WIN !!
- KEEP A WELCOME IN THE HILLSIDE.
- LEARN OUR ANTHEM (NOT JUST THE CHORUS), If not just CRY when its sung!
- EAT AND ENJOY LEEK SOUP.
- CONGREGATE AND DRINK ON INTERNATIONAL MATCH DAYS.

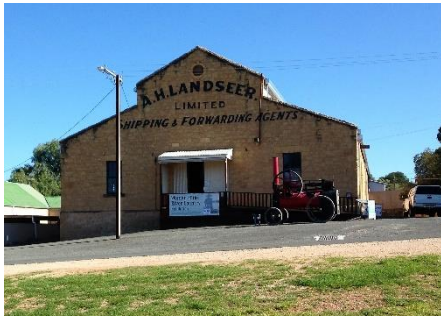
Amy's Monday Art Group for Children
The pictures tell the story...



Contributed by Janet and Mel...

Morgan Heritage Walk

http://visitmorgan.com.au/html/historic_walk.html



1. Landseers' Warehouse

The Landseers' Warehouse was completed in 1878 in time for the official opening of the Railway. AH Landseer Ltd was not only the largest merchant in Morgan, but the largest trading and shipping company on the Murray. A private section of the railway was built for the extra convenience of shunting loaded trucks between station and warehouse. Morgan Museum is the current caretaker of the building. It houses the Living History compilation reflecting the rural farming community and townspeople and a rare collection of horse drawn vehicles of historical significance. National Touring Exhibitions on display.



2. Marion Lodge

The Marion Lodge is now available as holiday rental. The lodge was originally built as shop premises and is believed to be the first bake-house of five to be established at Morgan. It is known that Mrs. Duggin conducted a bakery and grocer there in 1892.



3. Former Soldiers Memorial Hospital

The Soldiers Memorial Hospital was officially opened in 1921 by Lady Weigall.

The first medical staff were Dr. Gillan and Matron Dorsch. Four years later the maternity wing was opened. Shortly afterwards, Violet Runholm, a 16-year-old employee, was burnt to death while performing her duties. The hospital closed in 1942 and the nurses' quarters were demolished in the 1970s.



4. Railway Billets

This building was once used as accommodation for Railway employees who serviced the Kapunda-Morgan Railway line. From this vantage point you can still see the old rail spur running up the gully where they used to turn the larger train engines around which would not fit on the earlier constructed turntable. Also the old bridge supports are still standing that carried the train through to the Port.



5. Ferry Terminus

The Ferry Terminus is believed to date back to the 1850s when passengers would winch themselves across the river. The first official ferry, built in Morgan in 1906 (hand operated) charged 1penny (1d) per passenger, 2 pennies (2d) per cattle, ¼ penny per sheep, 1penny per pig, tuppence (2d) per bicycle and sixpence (Zac 6d) per vehicle. The ferry operator's wages were fifteen shillings (15 Bob or 15/-) per week.



6. The Morgue

The Morgue was erected in 1886 – victims of accidents along the river were taken there by steamer prior to burial. The cemetery was established in 1889 and is situated on the outskirts of the township (off the Burra Road). The burial records can be viewed in the Morgan Living History museum (Landseer's Warehouse). It is believed that the first person to be buried at the cemetery was a Royal Navy Surveyor by the name of Harvey, who had speculated whilst assisting in the preparation of the ground, as to who would be the first to be interred. Tragic and ironic – he died by drowning the next day.



7. The River Murray

The River Murray is the longest river in Australia and the life blood of South Australia, also is part of The Murray Darling Basin. There is a flood indicator pole next to the boat ramp with the flood levels marked clearly.



8. Turntable

The train turntable was constructed in 1878 to facilitate the turnaround of railway engines in the rail yard.



9. Water Hydrant

The water hydrant supplied water for use in the steam locomotive boilers.



10. Station Platform



11. Ticket Office and freight car

The steam train engine “Pioneer” made its first run into Morgan on April 17th, 1878, and the last train “Duchess of Gloucester” pulled out 91 years later in November 1969. Six trains a day were once in operation and the Morgan line became the busiest in the State. Now not even a railway line is to be seen. This platform has now become Morgan’s Water front Museum. Exhibits concentrate on the paddle steamer/railway trade of the illustrious past assisted further by underwater discoveries from the area.



12. Railway Refreshment Room

Built in the 1940’s to cater for passengers transferring from train to bus. Wally Pendle ran the mail and passenger service. Starting with T-Model Fords and extending to buses continued until 1949 when the business was taken over by Stateliner Pty Ltd. It is estimated that 400,000 passengers were safely transported. The Sunraysia Café in Post Office Row provided refreshments.



13. Oil Shed & Railway Platform Crane



Rail line continued to the stockyards just beyond the north gates.



14. Railway Track

Serviced the wharf area and the stockyards at the end of the line.



15. The Wharf

The Morgan Wharf was and still remains one of the most impressive examples of its kind on the entire River Murray system. As a Port Morgan became a huge success, and during the height of the steamer trade between 1880 and 1915, the massive red gum and blue-gum wharf was extended. The large structure was progressively lengthened and built in three stages. The first section in 1877, the second section in 1878 and the final only remaining section we see today in 1912, combining an overall length of 168 metres, or 550 feet. The wharf was more than just a timber loading plat-form; it was in the prime of its working life, a complex of five water hydraulic cranes with associated piping, gearing and drive shafts linked to the steam boiler house and engine house. The rear section of the platform carried a railway line and an extensive part of the platform was covered with a large goods shed. A network of stairways, ladders and decking descended through the massive timber piers and girders to provide service to landing stages at lower levels. Gangs of up to fifty men worked continuous 24 hour shifts, while six trains a day were dispatched to Port Adelaide, and long queues of paddle steamers and barges laden with wool, wheat, and other goods to be unloaded, were a common sight.



16. Sunken Barge & Steamer

Just upstream of the wharf the rusting ribs of the barge “CROWIE” lie close in by the riverbank. Built at Goolwa in 1911, and is reputed to be the largest built for the River Trade. The vessel sank at its moorings in 1946. It remains a reminder of the days when barges towed by steamers carried thousands of tons of wool, wheat, timber and agricultural goods up and down the river. The wreck of the Sternwheeler “COROWA” lies 200 yards up from the wharf, built in 1868 at Moama. Part of her stern wheel rudder poles lies above the water and a small section of a steam pipe and boiler lies proud of the water to a height of about 10 centimetres. She sank at her moorings in 1946 after being abandoned.



17. Powder Magazine

Dug into the cliff, the powder magazine was built in 1881, for the safe storage of explosives.



18. Goods Shed

In front of which is the steam boiler, recovered from the river.



19. Station Master’s Residence

Built in 1887 at a cost of £890 and housed the first Station Master Tom Tapp, who commenced his duties on October 28, 1878. The building comprises a Ladies Waiting Room and Booking Office adjoining the residence of two bedrooms, kitchen and dining room.



20. Moreton Bay Fig Tree

Planted Morgan Council 1907.



21. Commercial Hotel

Built in 1878 was primarily the working man’s hotel. In the early days of wharf building some 60 workers were accommodated there and meals had to be served in three sittings.



22. Post Office Row

Morgan's first row of five shops supplying services over the years, the centre shop was built in 1880, the lower two added by 1900. The top shop in the row was at one time the office of the Gem Navigation Co Ltd and Murray Shipping Ltd. Now open as an Antique shop and museum with a unique collection of tapestries and vintage hand tools.



23. Captain Charles Sturt Monument

Commemorates his voyage of exploration along the river Murray and back in 1830, and who later led an exploration team to Central Australia in 1844.



24. Current Post Office

Built In 1912 the front section of the new Post Office was erected, at a cost of only 40 pounds. Further additions to the building were made in 1913, and the final improvements bringing the building up to its present stage were completed in 1942.



25. Former Postmaster's Residence

Built in 1879 at a cost of £675 this building served as Post Office, Postmaster’s residence and Telegraph Station. Postal services were conducted in rooms at the front, and entrance to the residence was at a side door.



26. Former Police Station

Built in 1879 and Sergeant Schmidt took up duties there. The cells from the previous Police Station were brought up from the river flat and re-erected at their new location in 1891. Was the former Customs Residence.



27. Lookout

This is the site of the underground water tank used to fill steam engines which was built at the beginning of the rail era in Morgan and which has had the roof removed and been backfilled and now a nice garden has replaced the water. Also you will find a sign 'River Boat Trail'. This sign is to promote the remaining historic boats and sites associated with shipping on the River Murray.



28. Former Customs Residence

The Custom Residence was built in 1879, faced the Murray River, and further sections were added, policeman’s residence for some, then the Railways took over the cottage, and in more recent times is a private residence.



Former Railway Cottages facing NE.

29. Former Railway Cottages

Four railway cottages were erected on Billy Goat Hill (about 1879) to house railway employees.



Former Railway Cottages facing NW.



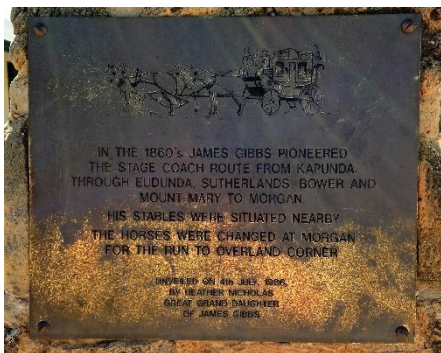
30. Trees of Tribute

The trees of tribute were planted in 1940 by the students of the Morgan Primary School in memory of the soldiers who died in World War I. The children called this area the “Silent Wood” and passed through it with fingers-to-lips believing that harm would befall them if they broke the silence. In 2005 the Mid Murray Council and Morgan RSL redeveloped this area to its present attractive rest area.



31. Former Council Chambers

The District Council of Morgan came into official existence in 1888. Currently, Morgan Centre Pharmacy.



32. James Bennett Gibbs Cairn

In the 1860’s James Gibbs pioneered the Stage Coach route from Kapunda to Morgan; the stables were at this site.



33. Morgan Institute

The first stage of the Morgan Institute began early 1909. The grand official opening ball was held on Easter Monday 1910. The second phase of the building was in 1924 when the front portions were added to create a Returned Soldiers Memorial. Now also housing the Morgan Library.



34. Former Dunk Residence

The Dunk residence was built about 1885 for Albert Landseer Dunk, the Manager of AH Landseer Ltd and later the agent for Gem Navigation Co.



35. Kings Row

Comprises of a group of five houses – the central one being the former home of Captain Hugh King, referred to as “The Grand Old Man of the Murray”. Captain King, born at Glasgow in 1840, was an early pioneer of the River Murray paddleboats. He built his first boat “Moira” at the age of 25. This was followed by the building of “Cheviot”, “Princess Royal” and “Jupiter”. In 1889 he went into partnership and established the River Murray Navigation Co. Ltd and became involved in building a fleet of river boats, including “Jane Eliza”, “Gem”, “Pearl”, “Ellen” and “Ruby”. Eventually, as the sole owner, he sold out to the Gem Navigation Co. He died in 1921. It is believed that his employees occupied the other houses in the row.



36. Former Butcher Shop & Bakery

The former butcher shop and bakery, built in 1897 by Mrs. Bruhn, consisted of a residence, shop, store house and bake house. Trade carried on by the Bruhns, in this joint venture, entailed baking by night and butchering by day.



37. First Site of Former Bank of Adelaide

The bank of Adelaide operated from 1884 to 1896. Its closure was brought about by a general lowering of living standards directly attributed to an amazing increase in the rabbit population. Whilst rabbits ravaged the country, many people were forced to exist on flour and water.



38. Typical Square Plan Residence's

Built from local dressed limestone in the 1890’s.



39. Former Eudunda Farmers Building

Built by H Van Alpen in 1892, then became the trading establishment of John Symonds, a well-known river trader who was the first Chairman of the District Council of Morgan. It was purchased from J. Symonds in 1923 for the sum of £2,100 by Eudunda Farmers. (Friendly Supermarket).



40. Original Home of James Symons
Is a two-storey house built about 1880 by James Symons, who ran a wine shanty hotel on the river flat at North West Bend between 1869 and 1878, was one of the most affluent men in Morgan and a relative of John Symons – the first Chairman of the Morgan Council.



41. Former Shop of James Symons
Built in 1880 and used at various times as saddler, boot maker, sweet and cool drink shop. It was at one stage owned by the District Clerk and also used as temporary Council Office and Chambers at a rent of 5/- per week.



42. Former Shop of James Symons
Built in 1880 and used at various times as a butcher shop, jewelers, and soft drink retailer. William Beaumont, who arrived at Morgan in 1870, used these premises as a butcher’s shop from 1881 to 1901. He was the great grandfather of Sir Donald Dunstan, once Premier of South Australia. A huge wooden block on which animals were slaughtered still remains on the premises.



43. Terminus Hotel
Built in 1878 was originally referred to as Lambert’s Assembly Rooms. It hosted many a travelling show and social function prior to the building of the Institute and was patronized mainly by what was locally termed “The Heads” (Business Owners). Of historical significance, it was the first meeting place of the District Council of Morgan in 1888.



44. Former Shop of James Symons
Built in 1878, was burnt down and rebuilt before 1900. Now a café.



45. Old Tea Rooms
This pre-1890 building was first used as offices in 1900 converted into tearooms run by Mrs. Von Alpen.



46. Former Bank of Adelaide Premises
The Bank and these premises, built in 1909, shut in 1930 during the Great Depression. The premises were formerly used by the Waikerie branch of the ANZ Bank as an agency. The first ever Bank Manager in Morgan was GW Calder. Today it is available for holiday rental.

During our Riverland Holiday we visited Morgan twice (first day and last day). As a consequence, we took several hundred photos. So we have plenty to fill the remainder of this page and more will appear in another edition of the newsletter.

The Remains of the Morgan to Eudunda Railway’s ‘Permanent Way’!



One time ‘Permanent Way’ via cutting – facing away from Morgan toward Eudunda. Note triangle re-entry point covered by small shrubs on R side.



A triangle was eventually installed to turn locomotives being built too big to turn on the old turntable. The line at the top of this picture re-entered the main line to the L as described in top picture.



Permanent way just beyond the cutting shown above but facing toward Morgan township and just before the bridge that crossed over the road to the ferry.



Railway bridge abutment – two tracks wide. Note the local stone used in its construction. Reinforced concrete was added to cope with the development of larger heavier freight cars and locomotives.



SAR Steam Locomotive 526, ‘Duchess of Gloucester’. It was a sad day for Morgan when in November 1969, after once being the biggest and busiest inland port and rail centre, the last train, the ‘Duchess of Gloucester’ pulled out of the station 91 years after the ‘Pioneer’ made its first run! Morgan residents felt they were ‘sold down the line’ because the request they made for preservation of part of the line to Mt. Mary, was rejected.

Contributed by Denise and Granton...

'Old Fossils on the Road' continued...

Hello folks

We are back on the road again after spending a wonderful week in Lucinda and headed to Tully where we camped at the showgrounds along with a lot of others.



Tully Sugar Mill, Queensland.

We took a tour of the sugar mills, one of only two that have tours and found it to be informative and interesting on the process from delivery of the cane in the carriages that are weighed before emptying. Each bin is numbered and allocated to growers so the mill knows exactly where it has come from and which field. The bins hold up to 10 tonnes of cut cane and taken to the tippler which rotates around depositing the cane into a chopper and then onto a conveyor belt where they end up being crushed to extract as much sugar syrup from the cane as possible. The fibre left, which is called bagasse, is then stored and used as fuel to burn for the boiler plants that run on steam. The liquid is then reduced and evaporated to end up with about 70% of the sugar still in liquid form and contains molasses so therefore it is spun to separate this from the raw sugar which is then dried and becomes sugar crystals and the molasses is used on dairy farms and fed to the cows. Tully sugar is very high quality and exported. Sugar processing in Tully dates back to 1860.



The Golden Gumboot at Tully, Queensland; stands just outside the town's main street.

It was then onto Paronella Park along a narrow road and took longer than we thought but eventually arrived to a very busy place and no parks available to camp so we were directed to camp behind the hotel up on the hill, and being wet, we found a spot high up so that we wouldn't get too water logged. The day turned sour with wind and rain, but we still ventured into the park.

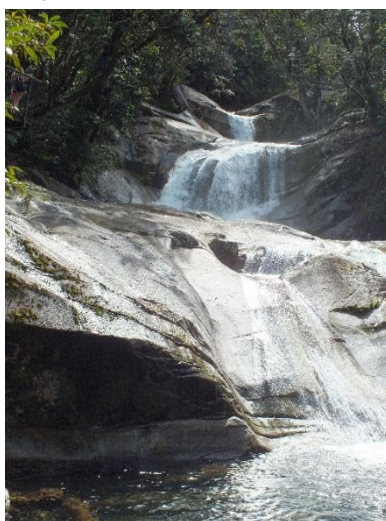
Paronella was named after a Spanish immigrant, Jose Paronella. Jose had a dream from his childhood days of stories read to him by his mother that he wanted to build his own castle. In 1913 he decided to come out to Australia to make his fortune before marrying his fiancé. After 12 years and many jobs he finally thought that he had made his fortune and upon return home found that his fiancé had married the year before, because she had not heard from him in all that time and feared that he had died. Luckily her sister was available so Jose married Margarita instead and brought her to Australia.



Paronella Park was built in the 1930s by José Paronella; Mena Creek, Queensland.

In 1929, Jose purchased land and set about to build a home for them, which he did in 3 months. He then built a 47 step staircase leading down to the river and waterfall. He built tea rooms resembling a castle. He was a very clever man and was the first to have electricity in his home after building a turbine driven by the fall of the waterfall. By the 1930s he opened up his gardens and tea rooms for people to come and enjoy. After his death and his wife's death it was left to the children to care for, but after floods and cyclones it fell into disarray and for 20 years was abandoned until the current owner took over and set about to restore the gardens and once again people can enjoy.

We then had 4 nights at Babinda in the Rotary free camp in the wet weather and soon found that this was a very popular free camp with anything from up to 80 staying overnight.



Josephine Falls, Cairns, Queensland.

With a little bit of a break in the rain we decided to drive down to Josephine Falls where there were well maintained pathways. These were a wonder to see with plenty of water cascading over 3 different levels into rock pools, especially after all the rain that has fallen. This is a very popular spot for swimmers. Josephine falls are fed from Queensland's highest mountain, Bartle Frere, which is 1622 metres high and as we drove past it, even though the sun was shining, there were clouds over the mountain.

We then made our way to Cairns for a week driving through heavy showers and arrived to a soggy tropical camp site with the Freshwater creek just outside the van.



Freshwater Creek, Cairns, Queensland.

It was so soggy underfoot with water flowing everywhere and puddles to wade through just to get to the toilet. While here we managed some of the typical tourist attractions and finally the sun shone on us and cleared up. Of course, we did the Kuranda Markets and Barron Falls, we drove out to Copperlode Dam on Lake Morris. The road was extremely windy and steep and slow going. The lake is in a World Heritage area in Wet Tropics. The dam was formed in 1976 by damming up Freshwater Creek; the same creek flowing past our caravan. Over 37,000 mega litres is collected in 44 kilometres of catchment area with 332 hectares of surface area.



Crystal Cascades.

Our next stop was into Crystal Cascades with a 1.2 kilometre steep walk uphill to the falls, which are fed from the Copperlode Dam. As it has been 16 years since visiting Cairns we were pleased to see that along the Esplanade they have now created a boardwalk and activities for families to enjoy. Hopefully, now the weather is clearing as we head to Mossman in the morning. Sorry to say that we are enjoying warmer weather than those of you down south...so stay safe and dry. **Until next time, Granton and Denise.**

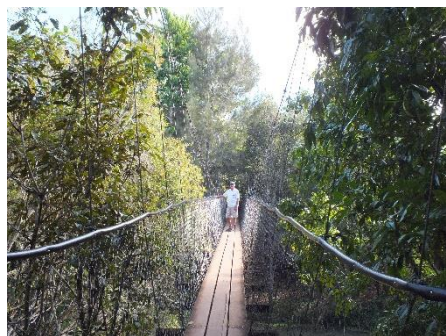
Contributed by Denise and Granton...

'Old Fossils on the Road' continued...

Hello folks,

Here we are again saying hello to you all. Since our last email, we spent time in Mossman where we ventured to Daintree and went as far as Cape Tribulation where we meandered on the beach overlooking the Cape. It was a bit windy but still enjoyable. While there, we poked our noses into little places that we hadn't done before and called into the Daintree Tea Plantation where we could see the tea bushes growing; and of course bought some tea.

We went out to Mossman Gorge, which has changed dramatically since we were there last. You can no longer drive up to the Gorge so we paid for a shuttle bus to take us the 2 kms up hill. There is now a great visitor centre at the base where you catch the bus with a cafe and shop. At the Gorge they have created an elevated walk to protect the environment where you can look down onto the creek and forest floor with lots of vantage points. At the end of the shorter walk there was a suspended bridge that took you over the creek and deep ravine. It was truly magnificent to revisit this place and was lovely looking out at the moss covered rocks with water babbling over them.

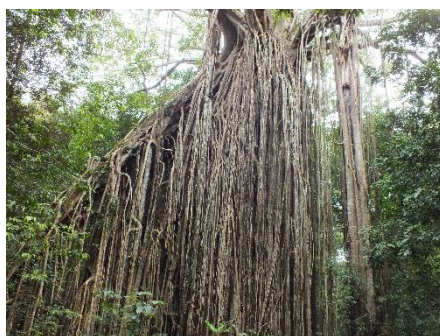


We then headed to the Tablelands for a few days in a free camp at Rocky Creek.

Rocky Creek, in 1943-1945, was the largest military base in Australia, hosting between 100,000 and 300,000 troops from 140 different units. It is now a Memorial Park recognising the largest field hospital in the southern hemisphere.

While on the Tablelands we visited Malanda Falls with a short walk down to it where they have created a concrete walled swimming area just below the falls. These were lovely wide short drop falls with plenty of water falling over the column basalt which were formed from the volcano's on the tableland about 3-4 million years ago.

Called into Nerada Tea Plantation where we could overlook the fields of tea plants and view the drying racks in the factory. A tea bush if left untrimmed will grow to 10 metres high but of course they trim them to a manageable height and a bush can keep producing new tea leaves for up to 100 years.



We then found our way to Cathedral Fig Tree, another 500 year old tree with a 72 metre girth and over 1,000 square metre canopy housing many varieties of ferns. We called into Lake Barrine, a crater lake where we found twin kauri pines. These stood over 45 metres tall and over 6 metres around the girth and are the largest of Australia's 38 conifer trees.



Time to move on again so we headed towards Ravenshoe and Archer Creek and had climbed up to 1125 metres. Going through the Herberton Range we were driving through rain forest. Nearing Ravenshoe we came up to Windy Hill, which is an extinct volcano and now home to about 20 wind turbines generating enough electricity for 3,500 homes.

Drove all of 11 kms down the road to Innot Springs nestled next to Nettle Creek where the water comes out of the ground at up to 75C. 100 years ago the water was bottled and sent back to Europe because it was thought to have therapeutic values. Settled ourselves into the park before venturing into the thermal pools.

These are in two different sections with one set of 3 pools being outside in a rustic surrounding being 25C, 32-34 and 34-36C and the other under cover which were obviously newer as they were tiled. Here again there were 3 pools at 23-25C, 38-40C

and the hottest being 41-45C which was too hot to get into.

On our way to Townsville we had a stopover at Greenvale. Greenvale was once a Nickle Mine area and Slim Dusty made it famous in a song about the railway from Townsville to Greenvale and the Three Rivers Hotel.

Now we are in Townsville until tomorrow and we were fortunate that the markets were on while here. They close off half the main street with stalls lined up each side of the footpath offering all sorts of handicrafts, produce, collectables, clothes etc....very impressed with how it was all set out.

The weather has been glorious while here and not looking forward to heading southward tomorrow, although we will probably not go too far yet.

Keep warm all, until next time

Granton and Denise

Contributed by Augie...



A nice one from Patrick Gundersen.

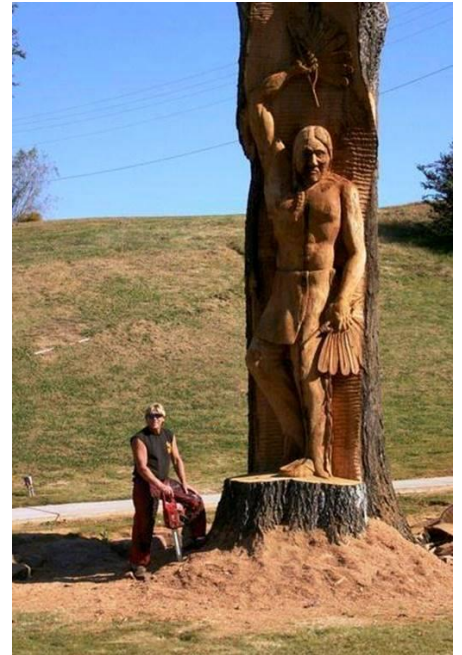
"Nature never ceases to amaze me! Of all the crystals I have found over the years, no two are alike and some are just so unique. I've never found anything like them since; not such as this beautiful "cathedral" growth smoky/citrine crystal. This one was uncovered in the Torrington area of NSW, nearly 10 years ago, from a small pocket the size of a football; packed full of beautiful multi-terminated crystals. I thought I'd get this one out today and attempt a decent photo of it. Crystal measures 45mm X 22mm." Patrick Gundersen.



Another from Patrick Gundersen.

Citrine over Smoky Quartz (12cm tall – found 2012), "Moonlight Pocket", Bismuth Dam, Torrington, NSW.

Contributed by Doug Walker...
Nice Woodwork.



Contributed by Don Lynn...

Elliston 1990 – Nancy Lynn.

We wandered one day over Elliston way,
To stay with the Smiths, called Judy and Ray.
We stayed in their house called Thistledoo,
Which looks over the sea which was the brightest blue.



On Sunday to Talia Caves we did drive,
To find some cowries we all did strive.
We filled our bags with shells galore,
Then Ray found a sea horse on the sea shore.



We saw the dolphins swimming at Talia Bay,
They frolicked in the rolling waves, and there were no words to say.
We just gazed in awe at this very rare sight,
Of those mammals playing, what sheer delight.



We tried our hand at fishing from Ray's boat out in the bay,
But the fish, they weren't too hungry on that bright and sunny day.
At last Ray caught a whiting then an octopus on his line,
While the Mobyhawks kept on calling, "Come on, where is mine?"



High on a rock in the ocean wide,
We saw a seal with a mate by his side.
Some dolphins kept up as we sped merrily on,
Then a big angry shark we chanced upon.



Up to the top of Mt. Wedge we did go,
We took in the view way down below.
Next a picnic lunch at Walkers Rocks,
Where we walked on the beach and got wet socks.



That night we sat around a camp fire under a starry sky,
While the men caught garfish and tommies and the time went quickly by,
Next day we were quickly at them to scale and fillet those fish,
That night we had fish for dinner, it made a tasty dish.



Went for a wander 'round Lookout Drive, then on to Salmon Bay,
To look for clogs on the cliff tops so high, which we found there in the clay,
Next day the wind was howling so made just a very short run
To Mt. Camel by the sea shore, where we dodged the waves and had fun.



Continued Next Page...

Contributed by Don Lymn...

Elliston 1990 – Nancy Lymn.

Continued from previous page...



Now Friday is our last day and to Kenny Rocks we did go, Each one of us found a sea horse as we wandered to and fro. We walked for miles along the beach, then back for a great Aussie lunch, Of sausages cooked on a barbecue, they were so delicious to munch.



Now our holiday is nearly ended, we are travelling the long way home, It was great to have your company as the coastal roads we did roam, So its thanks to Ray and Judy for the time we've have with you, And I hope we can wander back again in a year or two!

Nancy Lymn.

Contributed by Doug Walker...

Don't fish in shallow waters up north!



Contributed by Doug Walker...

You Know It's Hot When...



You Know It's Hot When...



You Know It's Hot When...



You Know It's Hot When...



You Know It's Hot When...



Member's Noticeboard

For Sale

Attention: Cabbers & Collectors

Indonesian Amber for sale –

**Red, gold & the very rare
Sumatran blue**

**(which comprises only 2% of that
mined.)**

**Material has been carbon dated at
20-25 million years old.**

All AAA grade & sold by the piece.

Pieces range from 10 – 100 grams

Red / gold priced at .65 per gram

Blue priced at .80 per gram.

If interested, contact Augie

on 8265 4815 or 0433 571 887

For Sale

GEMMASTA GS.10

10 Inch Power Feed Saw

**Complete with - Board, Motor and
Hood**

Excellent Condition

Price New - \$3,100

For Sale - \$1,400

**Contact Tony Bailey at
0400293057**

Mineral Show

Adelaide Gem and Mineral Club

Sat. 8th & Sun. 9th October 2016.

Payneham Library, OG Road.

Rockhounds 50th Year Invitation

Greetings to all the Gem and Mineral Clubs of SA,

Below you will see an invitation to the Southern Rockhounds Swap Meet.

2016 is our 50th year so we would like to invite fellow members to come and help us celebrate the occasion on the 18th of September.

Please note that it is a simple swap meet and is not designed for professional traders.

**Swap Meet at the Southern
Rockhounds**

On Sunday the 18th September 2016; between 10.30am-2.30pm., we are Celebrating our 50th Anniversary.

Come and join us at our clubrooms at 17 Gerald Court Christie Downs. It's open to all South Australian Gem and Mineral Club Members.

BBQ lunch available for nominal cost.

Call Lyn on 8387 8951 *or* 0458 153 426 *or* email lyn@cloudford.com

Ten camp sites are available for those travelling longer distances.

Camp site Bookings are Essential.

All items must be Lapidary and Allied Craft related.

Kind Regards, Lynn Ford.

Useful Internet Links

2016 Australian Gem & Mineral Calendar: [Gem & Mineral Calendar](#)

Adelaide Gem and Mineral Club: [AGMC](#)

AFLACA-GMCASA: [AFLACA-GMCASA](#)

Australian Federation of Lapidary and Allied Crafts Association (AFLACA): [AFLACA](#)

Australian Lapidary Forum: [Australian Lapidary Forum](#)

Broken Hill Mineral Club: [BHMC](#)

Enfield Gem and Mineral Club Inc: [EGMC](#)

Flinders Gem, Geology and Mineral Club Inc: [FGGMC](#)

Gem and Mineral Clubs Association of South Australia: [GMCASA](#)

Metal Detectors - Garrett Australia: [Garrett Australia](#)

Metal Detectors - Miners Den Adelaide: [Miners Den Adelaide](#)

Metal Detectors - Adelaide Agent for Garrett Australia: [Shell Lap Lapidary Supplies Pty Ltd](#)

Mineralogical Society of SA Inc: [MinSoc](#)

Murraylands Gem and Mineral Club Inc: <http://www.murraylandsgmc.org.au/>

NQ Explorers: [NQ Explorers](#)

Prospecting Australia: [Prospecting Australia](#)

Shell-lap Lapidary Supplies: [Shelley's Lapidary Supplies Pty Ltd](#)

Southern Rockhounds: [Southern Rockhounds](#)

The Australian Mineral Collector: [The Australian Mineral Collector](#)