



**Tea Tree Gully Gem & Mineral Club Inc. (TTGGMC)**  
**Clubrooms: Old Tea Tree Gully School, 4 Dowding Terrace, Tea Tree Gully, SA 5091.**  
**Postal Address: 'As Above'.**  
**President:** Ian Everard. 0417 859 443 Email: [ieverard@bigpond.net.au](mailto:ieverard@bigpond.net.au)  
**Secretary:** Claudia Gill. 0419 841 473 Email: [cjrgill@adam.com.au](mailto:cjrgill@adam.com.au)  
**Treasurer/Membership Officer:** Augie Gray: 0433 571 887 Email: [bluedog50@optusnet.com.au](mailto:bluedog50@optusnet.com.au)  
**Newsletter/Website:** Mel Jones. 0428 395 179 Email: [teatreegullygmc@gmail.com](mailto:teatreegullygmc@gmail.com)  
**Web Address:** <https://teatreegullygemandmineralclub.com>

**March  
Edition  
2021**

## "Rockzette" Tea Tree Gully Gem & Mineral Club News

President's Report	General Interest	Club Activities / Fees
--------------------	------------------	------------------------

Greetings All,  
 The Committee met for the first time in several months at the beginning of February.  
 It was agreed that our Biennial Show, scheduled for this July, will be POSTPONED until the April school holidays next year, due to ongoing uncertainty over COVID affecting interstate travel, as our show is supported by several interstate dealers.  
 The first normal Monthly meeting for 12 months was also held last month and was well attended by the usual suspects.  
 That is all the news for this month. Stay safe and happy.  
 Till next month – Cheers, Ian.

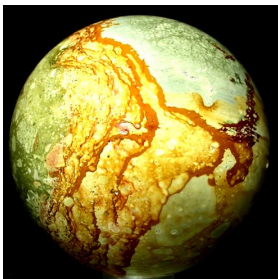
### Diary Dates / Notices

**Happy Birthday**  
 Members celebrating March birthdays:  
 04<sup>th</sup> Eirene Smith

\*\*\*

### General Interest

**Page 2 and 3:**  
 Augie's March 2021 Jasper Selections ...

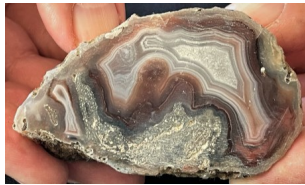


**Pages 3 to 5:**  
 Augie's Petrified Wood Selections...



The Tea Tree Gully Gem & Mineral Club Inc. is not and cannot be held responsible or liable for any personal injuries, loss or damage to property at any club activity, including, but not limited to, meetings, field trips, all crafts and club shows.  
 An indemnity is to be signed by all participants before each and every field trip activity they attend.

**Pages 6 and 7:**  
 Ian's March 2021 Agate Collection Selections...



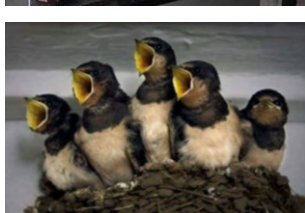
**Page 8:**  
 Ian's March 2021 Quartz Collection Selections...



**Page 9:**  
 March 2021 Minerals Crossword ...



**Pages 10 to 19:**  
 General Interest, humour, etc...



**Page 20:**  
 Members' Noticeboard and Links...

\*\*\*

### Meetings

Club meetings are held on the 1<sup>st</sup> Thursday of each month except there is no meetings in January. Committee meetings start at 7.30pm. General meetings start at 8 pm.

### Library

**Librarian - Augie Gray**  
 There is a 2-month limit on borrowed items. When borrowing from the lending library, fill out the card at the back of the item, then place the card in the box on the shelf. When returning items, fill in the return date on the card, then place the card at the back of the item.

### Tuesday Faceting/Cabbing

Tuesdays - 10 am to 2 pm.  
 All are welcome. Supervised by Doug Walker (7120 2221).

### Wednesday Silversmithing

Wednesdays - 7 pm to 9 pm.  
 All are welcome. Supervised by Jean Hickman (0419 837 886).

### Thursday Cabbing

Thursdays - 10 am to 2 pm.  
 All are welcome. Supervised by Augie Gray (8265 4815 / 0433 571 887).

### Friday Silversmithing

Fridays - 9 am to 12 noon.  
 All are welcome. Supervised by John Hill (8251 1118).

### Faceting/Cabbing/Silversmithing Fees:

A standard fee of \$3.00 per session applies – to be paid to the session supervisor.

In the interest of providing a safe working environment, it is necessary to ensure everyone using the workshops follow the rules set out in *Policy No. 1 - 20/11/2006*.

It is necessary that *Health and Safety* regulations are adhered to always.

Everyone using the workshop must ensure:

- that all club equipment (e.g. magnifying head pieces, faceting equipment, tools, etc.) used during the session, is cleaned, and returned to the workshop after usage.
- that all workstations are left in a clean and tidy state.
- that all rubbish is removed and placed in the appropriate bin.
- and where applicable, machines are cleaned and oiled or dried.

**NOTE: The Tea Tree Gully Gem & Mineral Club Inc. will not be held responsible or liable for any person injured while using the club machinery or equipment.**

### Club Subscriptions:

\$25.00 Family	\$20.00 Family Pensioner
\$15.00 Single	\$12.50 Single Pensioner
\$10.00 Joining Fee	

Contributed by Augie Gray...

### Rocky Butte Picture Jasper

Rocky Butte is another Picture Jasper originating high up in the Owyhee Mountains of far Eastern Oregon.

This quality, colourful Jasper was first documented by Jake Jacobitz in the 1970s and represents a fine example of the intricately detailed porcelain Jasper that the miners of times past found most desirous to harvest!

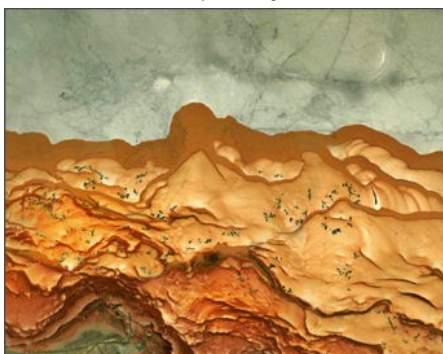
Rocky Butte is a deposit situated within a mile of the Original Owyhee Picture Jasper mine, and Rocky Butte is accepted as the most colourfully diverse Picture Jasper of all, of the over 100 known Picture Jasper deposits of the Owyhee Region. It is situated on the rim of a caldera that formed via volcanic activity millions of years ago and is within spectacular viewing range of the local landmark, Three Fingers Butte!



01 Rocky Butte Jasper.



02 Rocky Butte Jasper.



03 Rocky Butte Jasper.



04 Rocky Butte Jasper.



05 Rocky Butte Jasper.



06 Rocky Butte Jasper.



07 Rocky Butte Jasper.



08 Rocky Butte Jasper.



09 Rocky Butte Jasper.



10 Rocky Butte Jasper.



11 Rocky Butte Jasper.

Rocky Butte Picture Jasper – Continued...



12 Rocky Butte Jasper.



13 Rocky Butte Jasper.



14 Rocky Butte Jasper.



15 Rocky Butte Jasper.



16 Rocky Butte Jasper.



17 Rocky Butte Jasper.



18 Rocky Butte Jasper.



19 Rocky Butte Jasper.



20 Rocky Butte Jasper.

\*\*\*

Contributed by Augie Gray...

A selection of Petrified Woods from all over...



Arizona's Araucarioxylon arizonicum 1.



Arizona Araucaria 2.

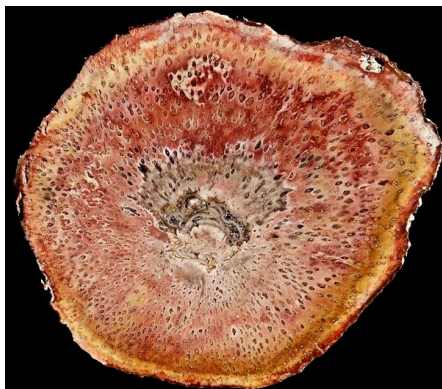


Arizona Araucaria 3.

**Petrified Woods – Continued...**



Arizona Araucaria 4.



Brazil Tree Fern.



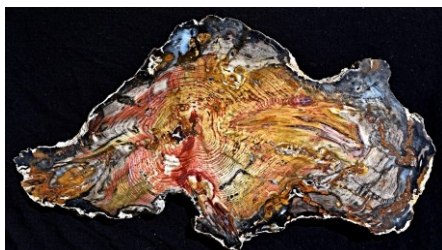
Hells Canyon.



Arizona Araucaria 5



Chromium rich Araucaria, Winslow, Arizona.



Conifer – Nevada.



Arizona Petrified Forest.



Fossil Fern, Wandoan, Q'land.



Hermanophyton taylorii.



Brazil Tree Fern Psaronius sinuosis.



Golden Oak.



Indonesian Palm Root 1.

*Continued next page...*

Petrified Woods – Continued...



Indonesian Palm Root 2.



Indonesian Palm Root 3.



Indonesian Palm Root 4.



Madagascan.



Nevada Petrified Spruce Cone.



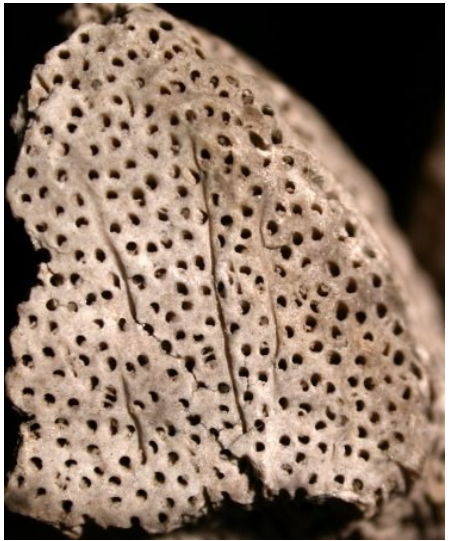
Oak, Washington.



Oak.



Imaged by Heritage Auctions, HA.com  
Palmoxylon Indonesian Petrified Palm.



Palmoxylon Palm 2.



Peanut Wood, Kennedy Ranges, W.A.



Pepper Wood, Blue Forest, Wyoming.

\*\*\*

Contributed by Ian Everard...

**My Agate Creek Agate Finds.**



Agate, Agate Creek, QLD.



Agate, Agate Creek, QLD.



Agate, Agate Creek, QLD.



Agate, Agate Creek, QLD.



Agate, Agate Creek, QLD.



Agate, Agate Creek, QLD.



Agate, Agate Creek, QLD.



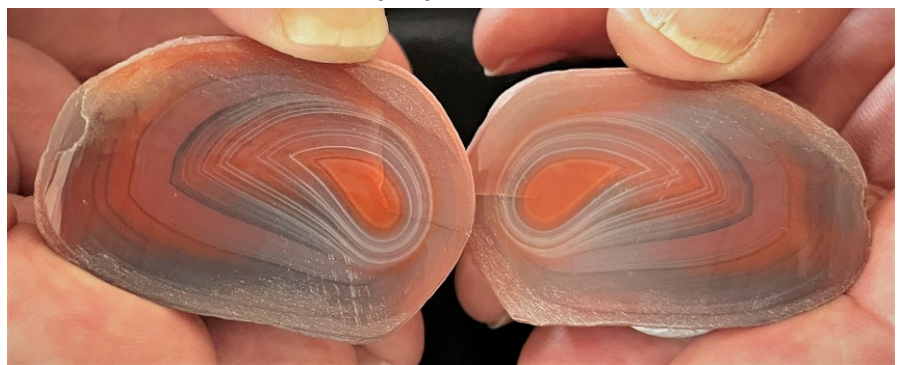
Agate, Agate Creek, QLD.



Agate, Agate Creek, QLD.



Agate, Agate Creek, QLD.



Agate, Agate Creek, QLD.



Agate, Agate Creek, QLD.

**My Agate Finds – continued...**



Agate, Agate Creek, QLD.



Agate, Agate Creek, QLD.



Agate, Agate Creek, QLD.



Agate, Agate Creek, QLD.



Agate, Agate Creek, QLD.



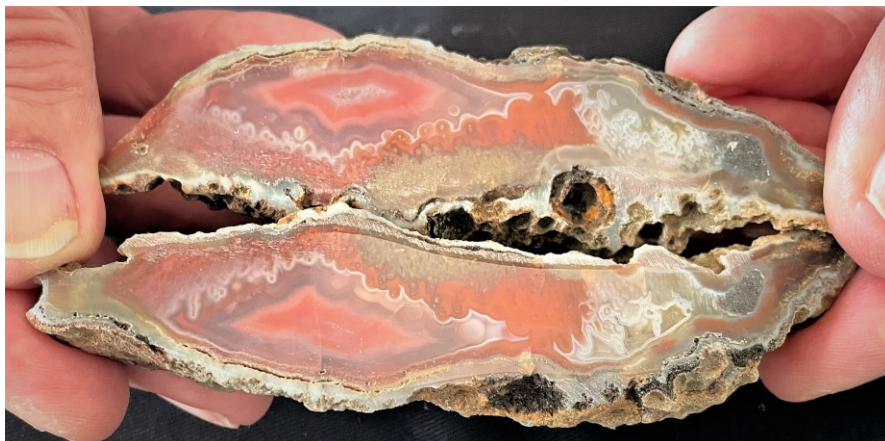
Agate, Agate Creek, QLD.



Agate, Agate Creek, QLD.



Agate, Agate Creek, QLD.



Agate, Agate Creek, QLD.



Agate, Agate Creek, QLD.



Agate, Agate Creek, QLD.



Agate, Agate Creek, QLD.



Agate, Agate Creek, QLD.

Contributed by Ian Everard...

**Quartz Collection Selections.**



0063 Quartz var Amethyst Geode, Agate Creek, Queensland.



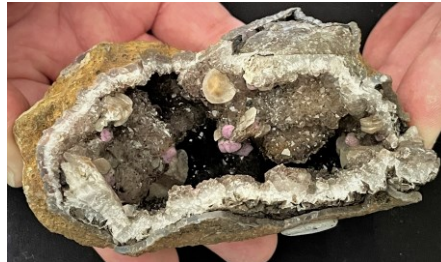
1069 Quartz var Amethyst & Calcite, Black Soil, Agate Creek, Queensland.



1666 Quartz var Smoky & Calcite, Agate Creek.



0207 Quartz after Calcite, Agate Creek, Queensland.



1070 Quartz var Amethyst, Calcite & Fluorite, Black Soil, Agate Creek, Queensland.



1901 Quartz, Black Soil, Agate Creek, Queensland.



0209 Quartz after Calcite, Agate Creek, Queensland.



1071 Quartz var Smoky & Calcite, Black Soil, Agate Creek, Queensland.



1904 Quartz & Calcite, Black Soil, Agate Creek, Queensland.



0428 Quartz var Smoky, Bald Hill, Agate Creek, Queensland.



1078 Quartz var Amethyst, Calcite & Fluorite, Crystal Hill, Agate Creek, Queensland.



2005 Quartz with Goethite inclusions, Agate Creek Queensland.



1063 Quartz var Smoky, Calcite & Fluorite, Black Soil, Agate Creek, Queensland.



1109 Quartz Geode, Black Soil, Agate Creek, Queensland.



2240 Quartz var Smoky, Calcite & Fluorite, Crystal Hill, Agate Creek, Queensland.



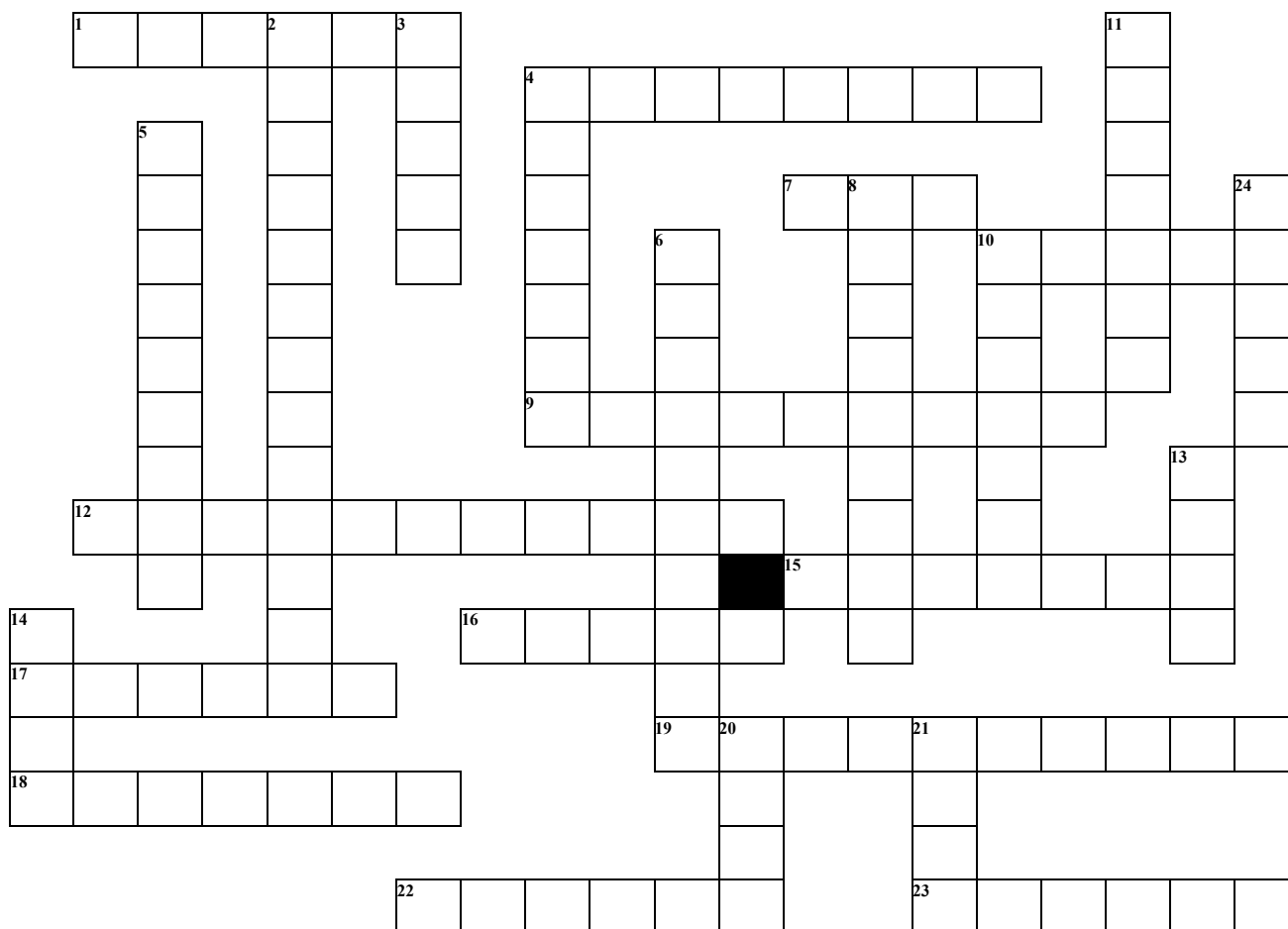
2385 Quartz Calcite & Fluorite, Black Soil, Agate Creek, QLD.  
\*\*\*



Contributed by Mel Jones...

### Minerals

(26 items - Answers in April edition)



**Across:**

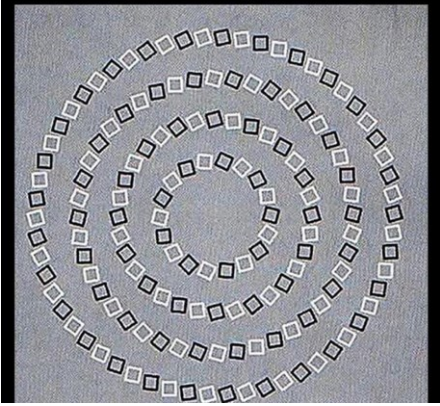
- 1. Igneous rock commonly found in oceanic crust.
- 4. Mineral found in the Ardrossan district, SA.
- 7. Number of mineral groups.
- 9. Boundary where plates move away from each other.
- 10. Rock with a crystal surprise.
- 12. The part of the earth that contains the plates.
- 15. Naturally occurring, inorganic, solid.
- 16. The core which is solid.
- 17. The most abundant element in the earth's crust.
- 18. Associated with Allan Dick.
- 19. Mineral found in the Disputed Mine, Harts Range, NT.
- 22 Mineral found in the Disputed Mine, Harts Range, NT.
- 23 Mineral found in the Disputed Mine, Harts Range, NT.

**Down:**

- 2. The plastic portion of the earth's crust and mantle.
- 3. Popular gem quality mineral found at O'Briens Creek, Qld.
- 4. The hardest mineral.
- 5. Halite crystal system.
- 6. Boundary where plates move towards each other.
- 8. Never alive or a product of a live thing.
- 10. An igneous rock common on the continents.
- 11. Dark green, translucent, crystal found in Harts Range, NT.
- 13. The softest mineral.
- 14. A native element.
- 20. Popular South Australian mineral.
- 21 Mineral found in the Disputed Mine, Harts Range, NT.
- 24 Mineral found in the Disputed Mine, Harts Range, NT.

**See answers to February 2021 Crossword on page 19...**

Where do they cross?



## Which Number is Missing ?

1 2 3 4 5 6 7 8 9 10 11 12 13 14 15 16  
 17 18 19 20 21 23 24 25 26 27 28 29  
 30 31 32 33 34 35 36 37 38 39 40 41  
 42 43 44 45 46 47 48 49 50"

Find N in text below

MM MM MM MM MM MM MM MM MM MM  
 MM MM MM MM MM MM MM MM MM MM  
 MM MM MM MM MM MM MM MM MM MM  
 MM MM MM MM MM MM MM MM MM MM  
 MM MM MM MM MM MM MM MM MM MM  
 MM MM MM MM MM MM MM MM MM MM  
 MM MM MM MM MM MM MM MM MM MM  
 MM MM MM MM MM MM MM MM MM MM  
 MM MM MM MM MM MM MM MM MM MM  
 MM MM MM MM MM MM MM MM MM MM



Which emoji is different?

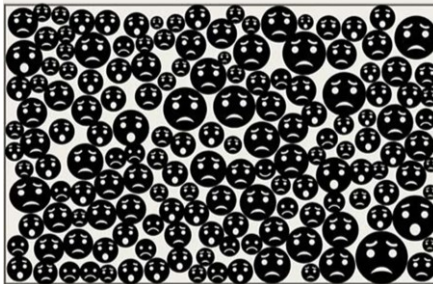
### Dog Search

D G O O D D O D G O O D D O  
 O D O O G G G D O D G O G G  
 O G O G D O O D G O O D D D  
 D G D O O O G G O O G D G O  
 O G D G O G D G O G G O G D  
 D D D G D D O D O O G D O O  
 O D G O G G D O O G G O O D

DOG

Can you find the dog?

Find the Smiling Emoji 😊 in the picture



### Hard Number Search Puzzle

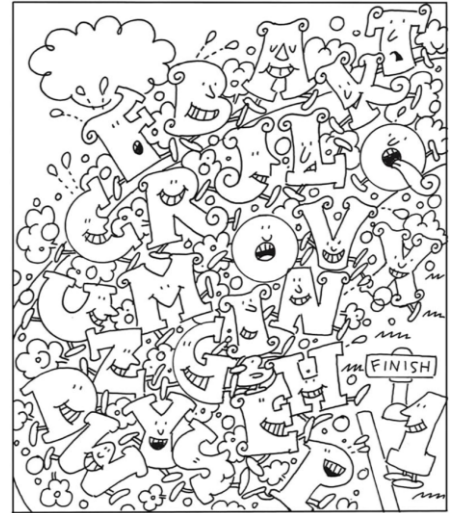
Look for these hidden numbers in the puzzle:

1668 6568 4045 3148 8899  
 1571 5630 3543 4071 5195

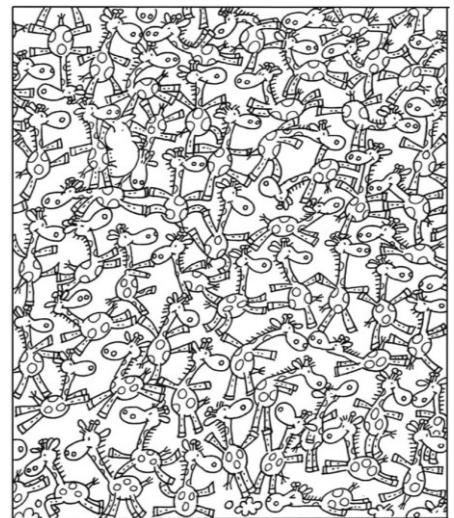
28281559152262159237  
 71008877744826620010  
 53114253389088965622  
 96901521915309610034  
 26105989734386472372  
 71932280307306553804  
 75524847665102242949  
 87609880619161860550  
 71976242343552839443  
 72262303811455313037  
 15114955784101213415  
 21656187379074012569  
 29929021436632092755  
 34407419867045135349  
 50481472026360325884  
 31287234532224796547  
 60708735836451154813  
 70398009223865604636  
 34258073424896499378  
 26938798043275740365



Find the Chick

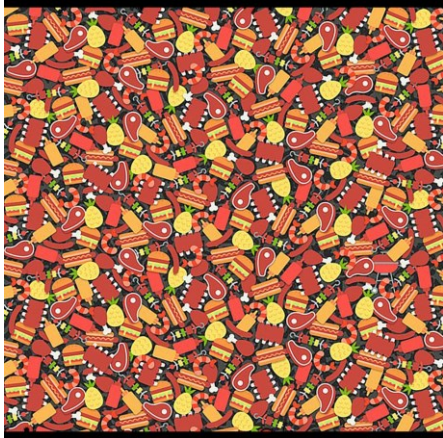


Find the Duck



Find the Rhino

\*\*\*



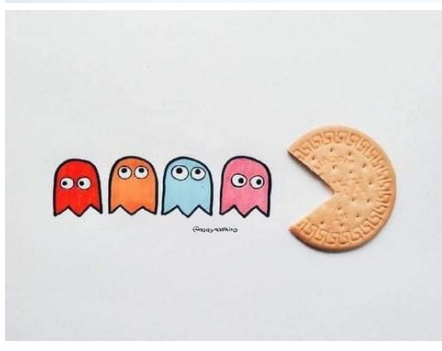
Can you find the Bar-B-Cue?

Contributed by Doug Walker...

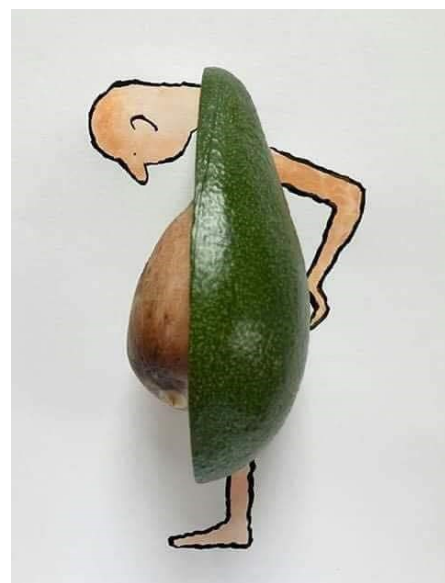
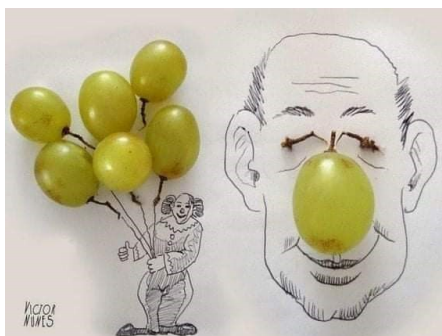
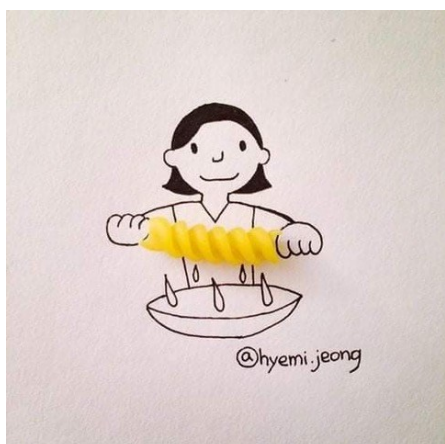
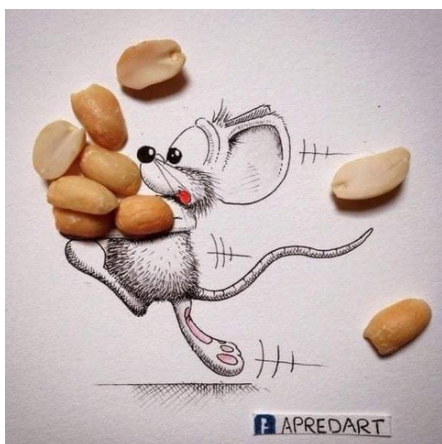
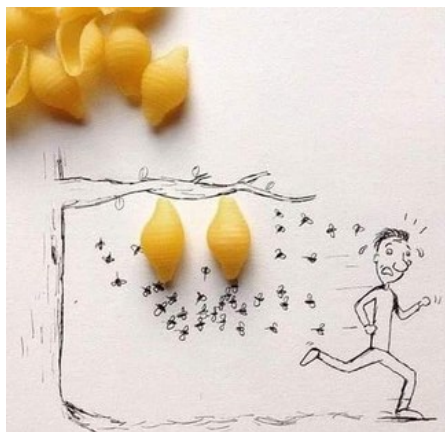
**Food as Art**



On s'en paie  
une bonne tranche.



Food as Art – Continued...



\*\*\*  
WHAT DO YOU CALL AN ALLIGATOR IN A VEST?



AN INVESTIGATOR.

\*\*\*

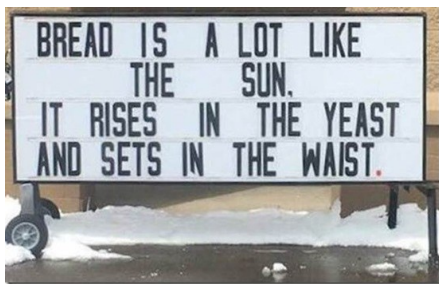
Contributed by Doug Hughes...

**Chuckles...**

**Lambs to the left of me. Mutton to the right. Here I am. Stuck in the middle with ewe.** 🐑🐑🐑



- Sherman\_Beardman** 1.3k points 2 years ago  
The fact that Kansas and Arkansas are pronounced differently bothers me way more than it should.
- madamplease** 13.7k points 1 year ago  
Pronouncing words that end in 'ough'. Cough, bough, rough, dough, through, though....
- Vaxtin** 4.7k points 4 years ago  
Is the "S" or "C" in scent silent?
- AdventurousMan** 4.6k points 4 years ago  
Why does fridge have a "D" in it, but refrigerator doesn't?
- Djimmieboy** 248 points 1 year ago  
Why are Zoey and Zoe pronounced the same but Joey and Joe aren't?
- MundaneRiot** 261 points 4 years ago  
You can drink a drink but you can't food a food.
- cherlishPanda** 218 points 4 years ago  
The word "queue" is just a Q followed by four silent letters
- saranowitz** 1 point 10 years ago  
Why is a "w" called a "Double-U" when it is clearly a "Double-V"?



\*\*\*

Contributed by Doug Walker...

**A Conversation About Perceived Value...**

A customer asked a contractor how much it would cost to do this project.  
 The contractor gave him a proposal: \$4500.  
 The customer responded: That seems high.  
 Th contractor asked: What do you think is a reasonable price for this job?  
 The customer answered: \$2500 maximum.  
 The contractor responded: Ok, then I invite you to do it yourself.  
 The customer answered: I do not know how to.  
 The contractor responded: Alright, then how about for \$2500 I will teach you how to. So besides saving you \$2000, you will learn valuable skills that will benefit you in the future. (Continued next column...)

The customer answered: Sounds good! Let us do it!  
 The contractor responded: Great! To get started, you are going to need some tools. You will need a chop saw, table saw, cordless drill, bit set, router, skill saw, jig saw, tool belt, hammer, etc.

The customer answered: But I do not have any of those tools and I cannot justify buying all of these for one job.

The contractor responded: Ok. Well then for an additional \$300 I can rent my tools to you to use for this project.

The customer answered: Okay. That is fair.  
 The contractor responded: Great! We will start the project on Monday.

The customer answered: I work Monday through Friday. I am only available on the weekends.

The contractor responded: If you want to learn from me then you will need to work when I work. This project will take 3 days so you will need to take 3 days off work.

The customer answered: That means I am going to have to sacrifice my pay for 3 days or use my vacation time!

The contractor responded: That is true. Remember, when you do a job yourself you need to account for unproductive factors.

The customer answered: What do you mean by that?

The contractor responded: Doing a job completely from start to finish includes time spent to plan the project, pick up materials, travel time, gas, set up time, clean up, and waste disposal amongst other things.

That is all-in addition to the actual project itself. And speaking of materials, that is where we will start on Monday, so I need you to meet me at the lumberyard at 6:00 am.

The customer answered: At 6 am?! My workday does not usually start until 8 am!

The contractor responded: Well then, you are in luck! My plan is to start on the deck build by 8 am. But to do so we must start at 6 am to get materials picked up, loaded, and delivered to your job site.

The customer answered: You know, I am realizing that a lot more goes into a job than what a customer sees in the finished project. Your proposal of \$4500 is very reasonable. I would like you to handle the project.

**Conclusion:**

When you pay for a job, especially a custom job, (whether it is a physical project or digital project) you pay not only for the material and the work to be completed. You also pay for:

- ✓ Knowledge
- ✓ Experience
- ✓ Custom Skills
- ✓ Tools
- ✓ Time to plan
- ✓ Time to prepare
- ✓ Professionalism
- ✓ Work Ethic
- ✓ Excellence
- ✓ Discipline
- ✓ Commitment
- ✓ Integrity
- ✓ Taxes
- ✓ Licenses
- ✓ Sacrifices
- ✓ Liabilities
- ✓ Insurance

If you request a proposal for custom work to be done, please do not disrespect a service provider by trying to get them to lower their prices.

If their proposal exceeds your budget, there is nothing wrong with getting other proposals.

Just remember you get what you pay for.

🏠 **Service Providers:** Know your worth and be confident in it.

🏠 **Consumers:** Recognise their worth and be respectful of it.

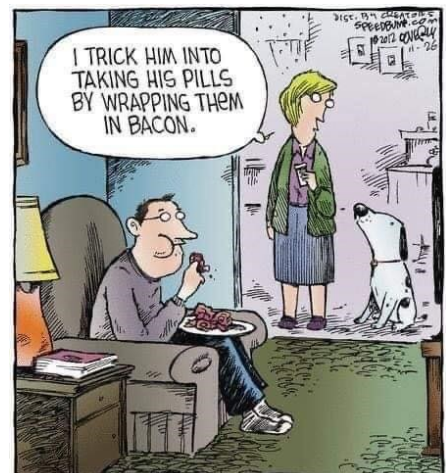
Contributed by Augie Gray...

More Stupidity...

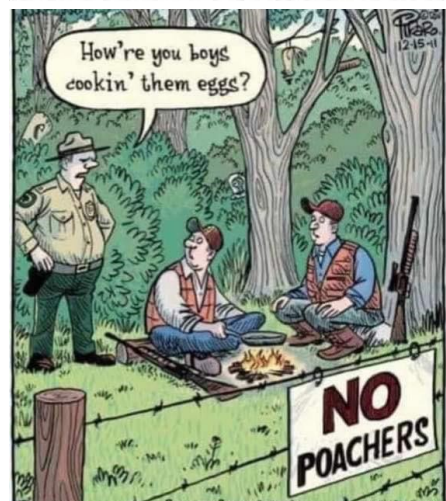
To prove that people will argue about anything ...



Here is a rock.



Normal Cone Silicone



Q. Where would you go if you wanted to weight a pie?  
A. Somewhere over the rainbow.  
(Sing the first 2 bars)

\*\*\*

Contributed by Allan Rudd...

Smile...

**NURSE CAME IN AND SAID DOC, THERE'S A MAN IN THE WAITING ROOM WHO THINKS HE'S INVISIBLE, WHAT SHOULD I TELL HIM? THE DOCTOR SAID TELL HIM I CAN'T SEE HIM TODAY.**

Not sure which is more funny; the church name, the city or the message. 😊



**If you boil a funny bone it becomes a laughing stock. That's humerus.**

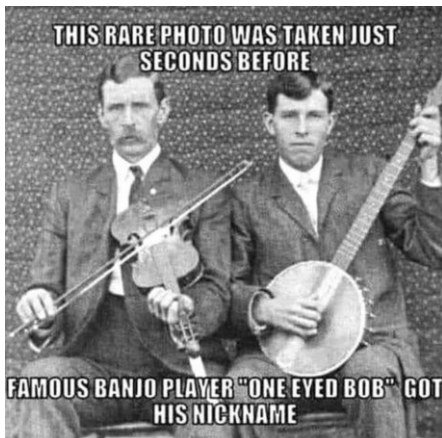


**I'M TAKING CARE OF MY PROCRASTINATION ISSUES; JUST YOU WAIT AND SEE.**

Astronomers got tired of watching the moon go round the earth for 24 hours.

So they decided to call it a day.

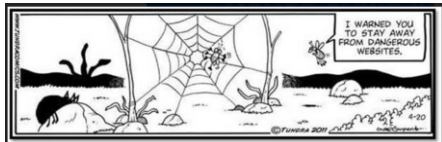
**I relabeled all of the jars in my wife's spice rack. I'm not in trouble yet...but the thyme is cumin.**



The tale of one eyed Bob

I have a pencil that used to be owned by William Shakespeare.

But he chewed it a lot. Now I can't tell if it's 2B or not 2B.



*I couldn't resist.* 😊



**They sing because they can.**



\*\*\*

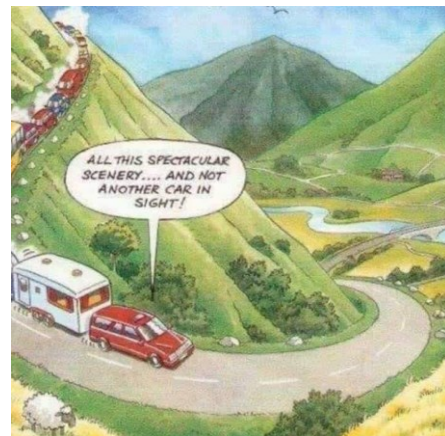
**Why did the M&M go to school? It wanted to be a Smartie.**

Contributed by Allan Rudd...

**Aussie Outback...**



\*\*\*



\*\*\*

Contributed by Doug Walker...

**The Myth of the Valentine heart....**

We were all brought up thinking the heart that you see for Valentine's Day is like the human heart.

This could not be farther from the truth.

The human heart is oblong, with a bunch of nasty looking arteries and ventricles winding in, out and around.

The attached image clearly shows the true origin of the Valentine Heart:



\*\*\*

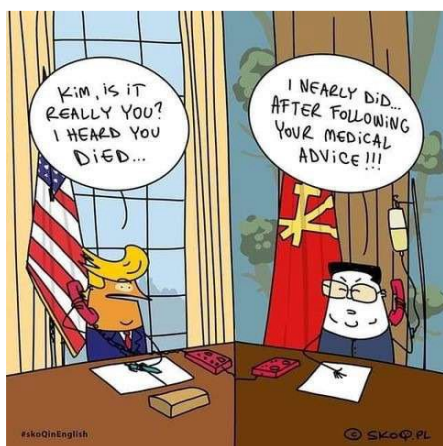
A plateau is the highest form of flattery.

\*\*\*



Contributed by Doug Walker...

**Cartoons from Canada**



**What do you call a pony with a cough?**

**A little horse.**

So apparently RSVP'ing back to a wedding invite 'maybe next time' isn't the correct response

**People who wonder whether the glass is half empty or half full miss the point. The glass is refillable.**



The manicure continues as usual in Amsterdam.

**For those who don't want Alexa listening in on your conversations, they're making a male version.....it doesn't listen to anything.**

**Therapist:** Your wife says you never buy her flowers, is that true?

**Him:** To be honest, I never knew she sold flowers!

\*\*\*

And in news just in, a man was admitted to hospital today with 25 toy plastic horses inserted in his bottom. Doctors have described his condition as Stable.



\*\*\*

**Chris Benton**  
30 Dec 2020 · 🌐

The lighter penguin is an elderly female whose partner died this year. The darker one is a younger male who lost his partner two years ago. Biologists have followed them as they meet every night to comfort each other. They stand for hours together watching the lights. Photographer Tobias Baumgartner captured this image of two widowed fairy penguins looking over the Melbourne skyline. It has won an award in Oceanographic magazine's Ocean Photography Awards 2020. 🐧💙👏



\*\*\*



\*\*\*

**Why do bees have sticky hair?**

**Because they use honeycombs.**

\*\*\*

Contributed by Allan Rudd...

Past Pictures – Adelaide SA



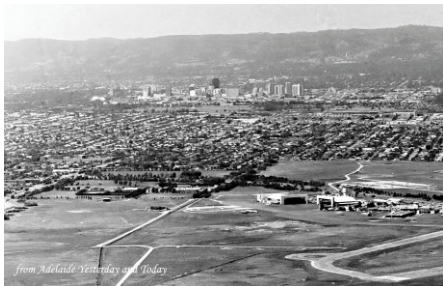
1945 V-J Day – victory over Japan.



Adelaide University, Frome Road, Adelaide - 1964 - 24-bit and 96Kb computer memory.



Adelaide 1932 depression years.



Adelaide Airport 1982.



Adelaide Oval 1877 for cricket.



Adelaide Oval 1897.



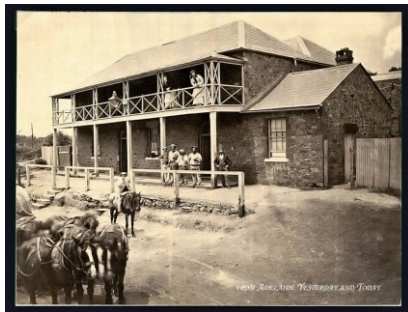
Bridgewater Railway Station, 1900.



Carclew House, North Adelaide, 1897.



Clarendon 1869.



Clarendon 1873.



Elizabeth dust storm 1968.



Findon skid kids 1985.



First plane over Adelaide 1914.



Centennial Hall, Goodwood Road, Wayville - 1936.



Holden Factory, Woodville 1928.



Aerial view of Woodville and the G.M.H. Stamping plant - 1954.

Contributed by Augie Gray...

## Rocks and Minerals

(Solution to Crossword featured in the February Newsletter)

										<sup>1</sup> S	A	N	D	S	T	O	N	E				
				<sup>2</sup> M					<sup>3</sup> M													
				I					E													
				N					T													
				E					A													
		<sup>6</sup> G	R	A	N	I	T	E			<sup>5</sup> S											
		A					D			O			<sup>8</sup> M			<sup>7</sup> S			<sup>9</sup> Q			
		<sup>10</sup> L	A	V	A			I			R			I			L			U		
				M			E			H			C			I			A	<sup>11</sup> I		
				E									A			M			R	G		
<sup>13</sup> M	<sup>14</sup> A	R	B	L	<sup>12</sup> E			<sup>15</sup> G	N	E	I	S	S			A			T	O		
		M					R			T		S			N			Z				
		P					O			<sup>17</sup> M	A	G	M	A			I			I	U	
		H					S			R							I			T	S	
		I					I			Y							T					
		B					O															
		O					N															
		L																				
		E																				
				<sup>16</sup> P																		
				R																		
				E																		
				S																		
				S																		
				U																		
				R																		
				E																		
						<sup>20</sup> L	I	M	E	S	T	O	N	E								

**Across**

1. Sedimentary rock consisting of sand or quartz grains cemented together.
4. Matter that settles to the bottom of a liquid.
6. A very hard, granular, crystalline, igneous rock consisting mainly of quartz.
10. Hot molten or semifluid rock erupted from a volcano.
13. A hard crystalline metamorphic form of limestone, typically white.
15. A metamorphic rock with a banded or foliated structure
17. Hot fluid or semi fluid material below or within the earth's crust.
19. A hard, solid, nonmetallic mineral matter of which rock is made.
20. A hard sedimentary rock, composed mainly of calcium.

**Down**

2. A solid inorganic substance of natural occurrence.
3. The change of minerals or geologic texture in pre-existing rocks
5. Types of rock that are formed by the deposition of material at the earth surface.
7. An aluminosilicate mineral typically occurring as fibrous masses
8. A various colored or transparent mineral.
9. A hard, non-foliated metamorphic rock which was originally pure quartz.
11. Rocks formed through the cooling and solidification of magma or lava.
12. The impact on sedimentary rocks being long exposed to extreme weather.
14. A class of rock-forming silicate or aluminosilicate minerals.
16. The continuous physical force exerted on or against an object.
18. The solid mineral material forming part of the surface of the earth.

**Mineral boxes and flats for sale**

Mineral box sizes

Sold in bundles of (10 for 100)

3.5 x 3.3cm.....	(\$1.50)	\$12.00
4 x 4cm.....	(\$1.50)	\$13.00
5 x 5.2cm.....	(\$2.00)	\$15.00
6.2 x 7.5cm.....	(\$2.50)	\$18.00
7 x 7cm.....	(\$2.50)	\$19.00
7 x 9.5cm.....	(\$2.50)	\$20.00
8.5 x 9.5cm.....	(\$3.00)	\$22.00
9.5 x 9.5cm.....	(\$3.50)	\$23.00
13 x 9.5cm.....	(\$4.00)	\$25.00
13 x 12.5cm.....	(\$4.50)	\$30.00

Flats sizes

395 x 265 x 50mm....	\$2.50
400 x 270 x 75mm....	\$3.50 <b>NEW SIZE</b>
398 x 290 x 98mm....	\$4.00

**Greg Vort-Ronald**

0413796279 or [luv2paint@iprimus.com.au](mailto:luv2paint@iprimus.com.au)

all boxes and flats are folded together, no staples required  
(Prices subject to change)

\*\*\*

Contributed by Augie Gray...



A fabulous suite of Wildhorse Picture Jasper cabs by Steve Schultz.

\*\*\*

- 2021 Australian Gem & Mineral Calendar: [Click here...](#)
- Adelaide Gem and Mineral Club - Facebook: [Click here...](#)
- Adelaide Gem and Mineral Club - Website: [Click here...](#)
- Australian Faceters Guild: [Click here...](#)
- Australian Federation of Lapidary and Allied Crafts Association (AFLACA) - Facebook: [Click here...](#)
- Australian Federation of Lapidary and Allied Crafts Association (AFLACA) - Website: [Click here...](#)
- Australian Gem Club Directory: [Click here...](#)
- Australian Lapidary Forum: [Click here...](#)
- Enfield Gem and Mineral Club Inc: [Click here...](#)
- Flinders Gem, Geology, and Mineral Club Inc: [Click here...](#)
- Gem and Mineral Clubs Association of South Australia: [Click here...](#)
- Gemcuts: [Click here...](#)
- Lapidary World: [Click here...](#)
- Metal Detectors - Garrett Australia: [Click here...](#)
- Metal Detectors - Miners Den Adelaide: [Click here...](#)
- Mineralogical Society of SA Inc – Facebook: [Click here...](#)
- Mineralogical Society of SA Inc - Website: [Click here...](#)
- Murraylands Gem and Mineral Club Inc: [Click here...](#)
- NQ Explorers: [Click here...](#)
- Prospecting Australia: [Click here...](#)
- Southern Rockhounds: [Click here...](#)
- Tea Tree Gully Gem and Mineral Club: [Click here...](#)
- The Australian Mineral Collector: [Click here...](#)